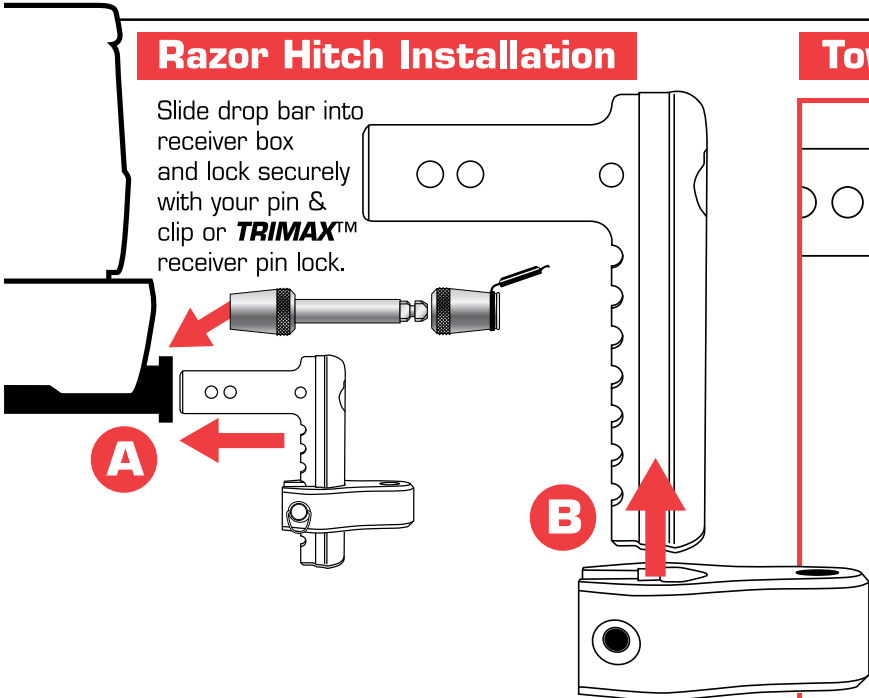




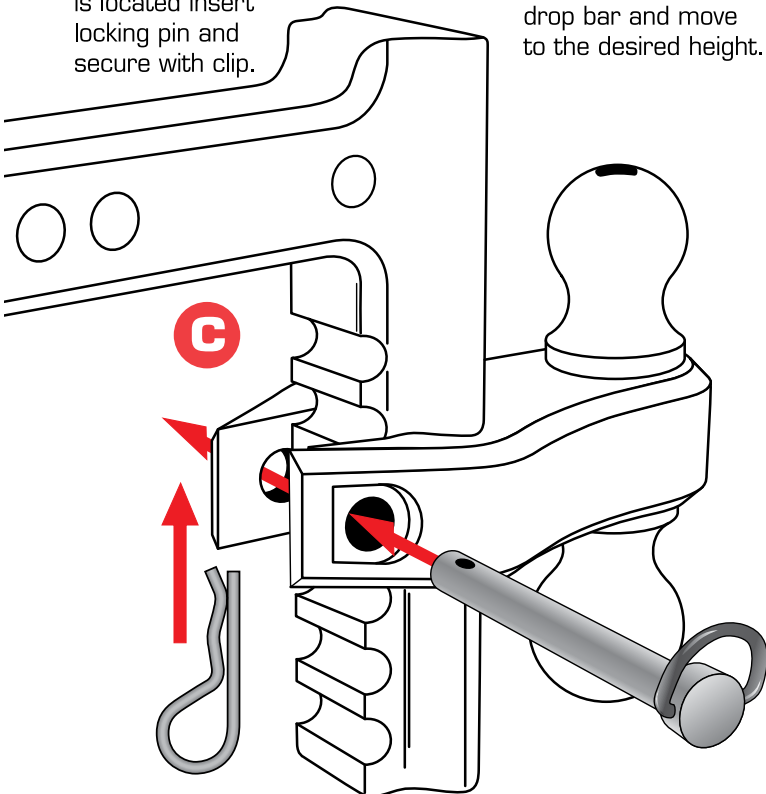
Adjustable Hitch System

### Razor Hitch Installation

Slide drop bar into receiver box and lock securely with your pin & clip or **TRIMAX™** receiver pin lock.

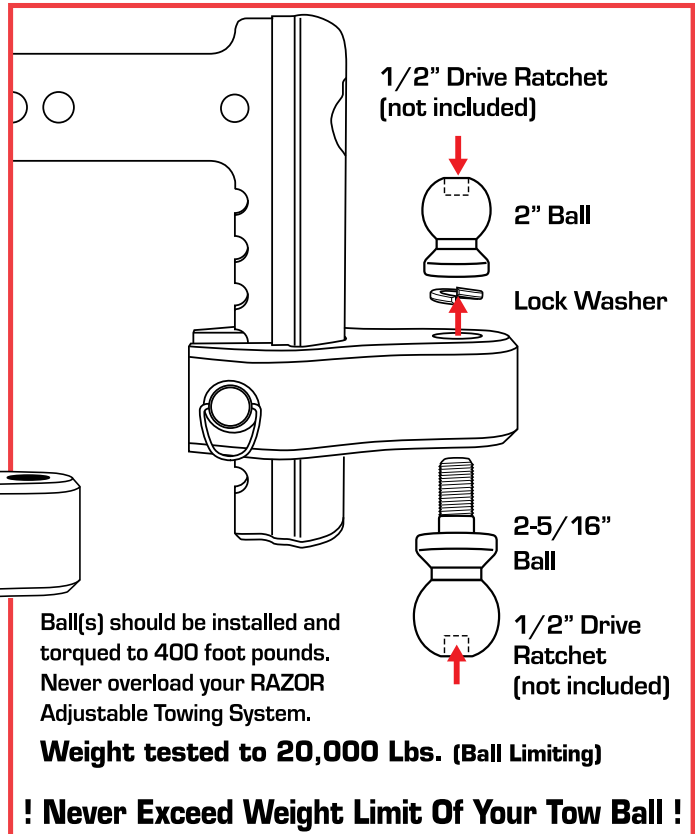


Once desired height is located insert locking pin and secure with clip.



Slide ball mount onto drop bar and move to the desired height.

### Tow Ball Installation



Ball(s) should be installed and torqued to 400 foot pounds. Never overload your RAZOR Adjustable Towing System.

**Weight tested to 20,000 Lbs. (Ball Limiting)**

**! Never Exceed Weight Limit Of Your Tow Ball !**

### Also Available:

#### TH45

Keyed Alike Lock Pin Set for added security.

Includes:

- 1) 5/8" Dia. x 4-3/16" Span Ball Mount Pin.
- 1) 5/8" Dia. x 3-1/2" Span Receiver Pin.



**\* DO NOT OPERATE RAZOR HITCH WITHOUT CORRECTLY AND SECURLY FASTENING PIN AND CLIP! \***

Visit Us On The Web @ [WWW.TRIMAXLOCKS.COM](http://WWW.TRIMAXLOCKS.COM), Or Call: 303-796-8500

CAUTION! CAUTION! CAUTION! CAUTION! CAUTION!

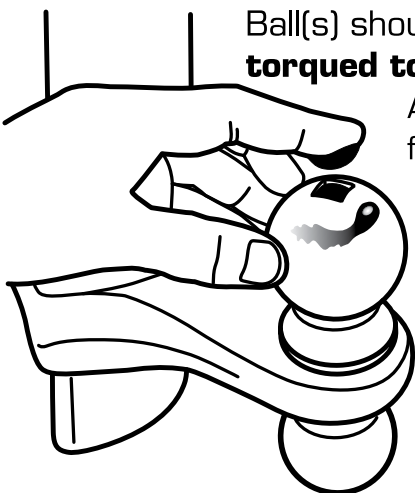
# SAFETY FIRST!!



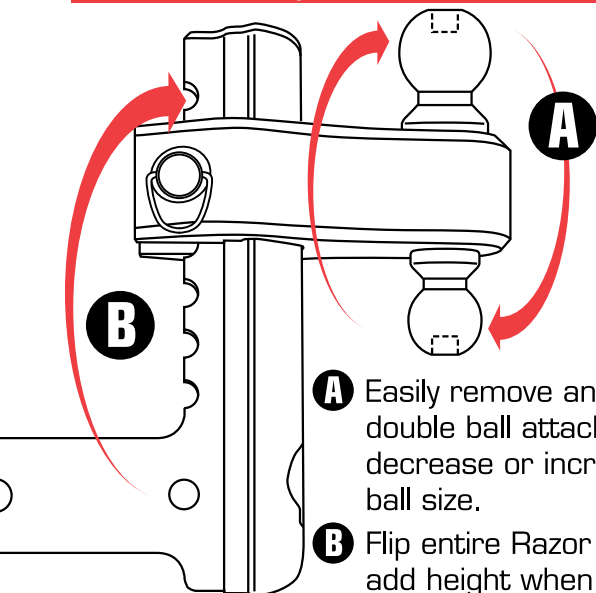
## Grease Reservoir

Ball(s) should be installed and **torqued to 250 foot pounds.**

After installation, fill 1/2" drive sockets with a quality bearing grease, which can be dipped out and used to grease ball surface during towing.



## Added Rise/Tow Ball Choice



**A** Easily remove and flip double ball attachment to decrease or increase ball size.

**B** Flip entire Razor hitch to add height when needed.

## CAUTION!!!

Never overload your RAZOR Adjustable Towing System. Weight tested to 20,000 Lbs. **NEVER EXCEED WT LIMIT OF YOUR TOW BALL.** Always use standard towing procedures and follow supplied check list.

## IMPORTANT CHECK LIST, Before You Drive

Make sure your vehicle and trailer maintenance are up to date before you drive. Review this easy to use check list to help ensure a safe trip every time.

- Properly secure safety chains and adjust hitch, coupler, draw bar and other equipment that connect the trailer and tow vehicle.**
- Tow ball/lug nuts/bolts on tow trailer and vehicle should be tightened to correct torque and **checked every 100 miles.**
- Check brakes on tow vehicle and trailer. These should be in good working order.
- Check tire pressure on tow trailer and vehicle before use. Correct if needed.
- Is wiring properly connected? Wiring should not touch the road but be loose enough to make turns without causing damage or plug to come disconnected.
- Are all running lights, brake lights, turn signals, and hazard lights in good working order?
- All items on and in trailer should be securely fastened.
- Trailer jack, tongue support, and any attached stabilizers should be raised and locked in place.
- Review load distribution. Make sure the tow vehicle and trailer load is properly distributed side to side and front to back.
- All mirrors should be set for good visibility.
- Review routes and restrictions on bridges and tunnels.
- Include wheel chocks and jack stands. **TRIMAX** Chock Locks #TCL65/75 are ideal for this application.



**DO NOT USE/OPERATE RAZOR HITCH WITHOUT CORRECTLY AND SECURELY FASTENING PIN AND CLIP!**

